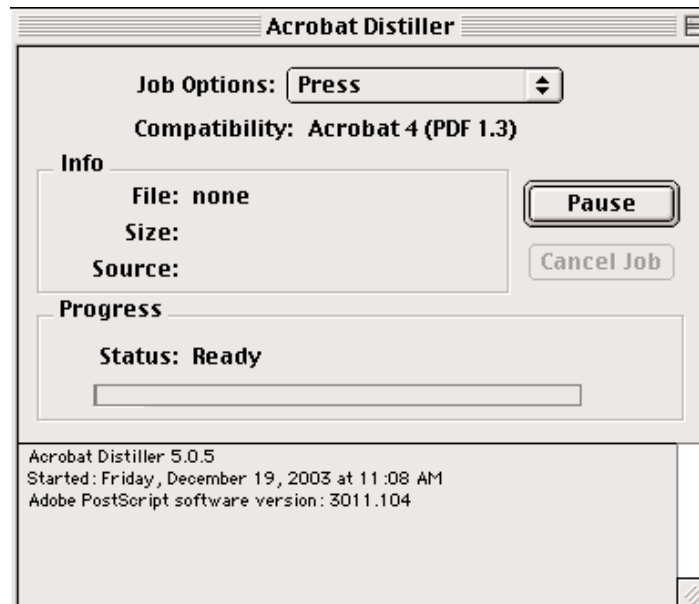


- **Press** - Uses CMYK colorspace, maximizes output DPI, does not apply color-management, embeds all fonts (unless font does not allow embedding), and supports DSC and OPI.



Of the 4 default job-options, Press is the closest to what Rampage needs. The only difference between the Press Job Options and the Rampage Recommended Job Options (described below) is in the compression tab where Color, Grayscale and Bitmap image downsampling should be turned off.

Rampage Distiller Options

The Rampage recommended Job Options for Distiller 5 are described in detail below.

General Preferences

General Preferences should be set up as follows:

- Compatibility** - The Compatibility option needs to be set to Acrobat 4.0 or higher. Otherwise spot colors will be mapped to a CMYK color space. Each comparability offers different options:
- Acrobat 4.0 (PDF version 1.3) - The standard for most PDF based workflows. Will work through most rips. Required for compliance with PDF-X1a.
 - Acrobat 5.0 (PDF version 1.4) - Introduced support for native Adobe transparency. Results in smaller files, but requires RIP to support PDF 1.4 transparency.
 - Acrobat 6.0 (PDF version 1.5) - Introduced support for layered PDF files, x-object compression as well as support for JPEG 2000 image compression.

Note: Each of these Acrobat formats are not retro-compatible, so

choose your compatibility carefully. Acrobat 4 is the safest choice for most workflows.

Optimize for Fast Web View - This setting should be left unchecked. Web optimizations are unnecessary for PrePress workflow and can cause problems with both NORM and ROOM.

Embed Thumbnails - This setting should be unchecked to create smaller PDF documents.

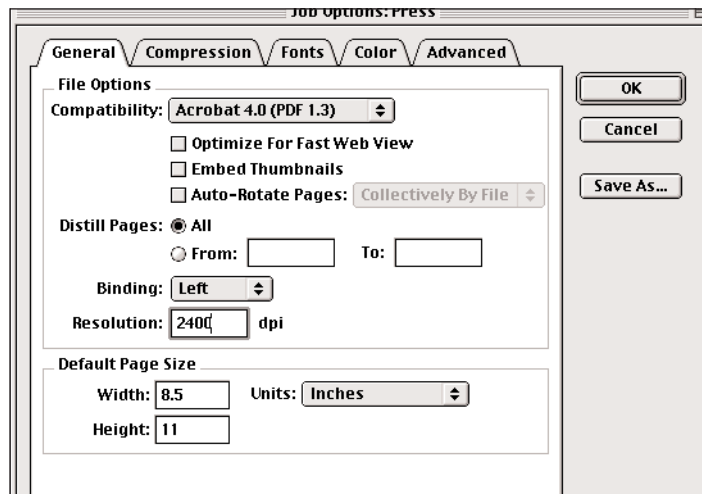
Auto-Rotate Pages - This setting should be left unchecked. Page Rotations should be handled in Rampage.

Distill Pages - All should be selected.

Binding - This setting should be set to Left.

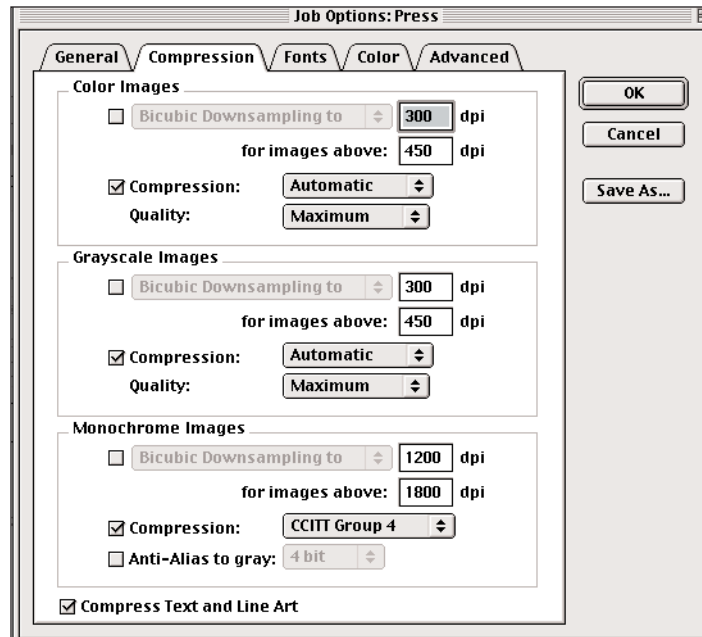
Resolution - Resolution should match the Rampage RIP DPI in the profile. This value will also affect the quality of logarithmic gradients.

Default Page Size - In most cases this does not need to be set and will be over-ridden by the bounding box of the postscript being distilled. Only if your PDF is coming out the wrong size should these values be altered (see the Advanced Tab for additional information).



Compression Preferences

- The check boxes for Downsampling of Color Images, Grayscale Images and Monochrome Images should not be checked. This will preserve the maximum amount of image data for Rampage.
- Compression for Color Bitmap Images and Grayscale Bitmap Images should be set to Automatic with a Quality value of Maximum.
- Compression for Monochrome Images should be set to CCIT Group 4.
- Anti-Alias to gray should not be checked.
- Compress Text and Line Art should be checked. This will reduce the size of your PDF file.



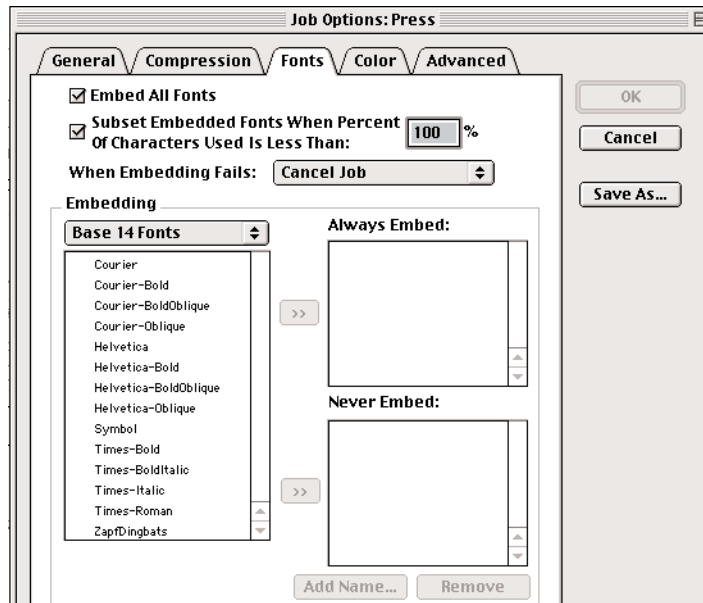
Font Preferences

Distiller allows you to embed TrueType, Type 1, Multiple Master or OpenType fonts into the PDF file. Embedding fonts should always be done unless you are absolutely sure the receiver of the PDF already has the fonts needed to display and print the PDF file correctly. Make sure Embed All Fonts is checked.

The Subset Fonts below setting is the percentage of characters in the typeface that can be used before Distiller will embed the entire font. Don't check this.

Note: If a compatibility lower than Acrobat 4.0 is selected in the General Preferences, only Type 1 fonts will be embedded into the PDF file. Acrobat 3 did not support TrueType fonts.

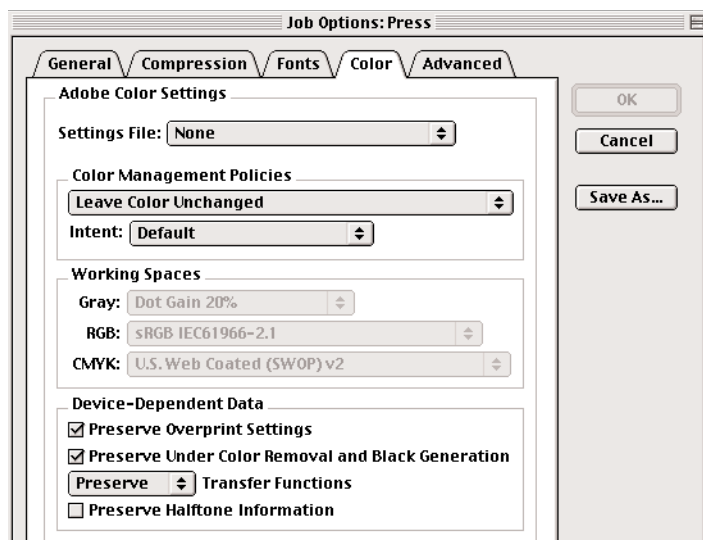
Note: Distiller 6 on Mac OS X supports the DFont standard.



Despite what the screen capture says above, do not select to subset the fonts!!!!

Color Preferences

- Settings File should be set to None.
- Color Management Policies should be set to Leave Color Unchanged.
- Intent should be set to Default.
- Preserve Overprint Settings should be checked.
- Preserve UCR and Black Generation should be checked.
- Transfer Functions should be set to Preserve.
- Preserve Halftone Information should be unchecked.



Advanced Preferences

Distiller's Advanced Tab contains settings that allow for PostScript features to be either maintained or over-riden in the PDF file. For more information on all these settings, please consult your Acrobat Manual.

Advanced Preferences should be set up as follows:

- **Use Prologue.ps and Epilogue.ps** - Prologue.ps/epilogue.ps is not needed. Leave this unchecked.
- **Allow PS File to Override Job Options** - This setting should be checked. This will over-ride any page-size set in the General tab.
- **Preserve Level 2 cöpypage Semantics** - This setting should be checked.
- **Save Portable Job Ticket Inside PDF File** - This setting should only be checked if using Job Ticket information. Otherwise leave unchecked.
- **Illustrator Overprint Mode** - Rampage uses this mode for its NORM workflow. This option should be checked.
- **Convert Gradients to Smooth Shades - IMPORTANT!** This should be checked. Leaving this unchecked can lead to trapping issues with Gradients.
- **ASCII Format** - Can lead to a larger file-size. Leave this unchecked.
- **Process DSC** - This setting should be checked.
- **Log DSC Warnings** - This setting should not be checked.
- **Resize Page and Center Artwork for EPS Files** - This setting should be checked.
- **Preserve EPS Info from DSC** - This setting should be checked.
- **Preserve OPI Comments** - This setting should be checked, unless preparing files for the NORM workflow. For NORM this option should be unchecked.
- **Preserve Document Info from DSC** - This setting should be checked.

